

Application of OMI NO₂ retrievals to the evaluation of NO_x emissions from on-road mobile sources in the Great Lakes Region

Momei Qin^{1,*}, Yongtao Hu¹, M. Talat Odman¹ and Armistead G. Russell¹
 1. Georgia Institute of Technology * Now at U.S. Environmental Protection Agency



Background

- A reliable NO_x (NO+NO₂) emission inventory is very important
 - NO₂ is a criteria air pollutant
 - NO_x participate in the formation of O₃ and particulate matter
- Possible overestimates of NO_x emissions in the 2011 US National Emission Inventory (NEI), likely associated with mobile sources (~30%) (Travis et al., 2016; Souri et al., 2016; McDonald et al., 2018)
- 50% reduction of NO_x emissions from on-road mobile sources in the 2011 NEI led to better agreement of the CMAQ simulation with ground-based measurements of NO_x and O₃ in the Great Lakes Region (Qin et al., 2018)

Methodology

Model-satellite comparison

CMAQv5.1

- One-way nested: 12 km/4 km (Fig. 1)
- Period of interest: July 2011
- 2011 NEI with in-line calculations for BEIS and point sources
- CB05e11
- Two runs
 - Base case
 - 50% of NO_x emissions from mobile sources
- NO₂ vertical columns calculated using the 4-km simulation between 13:00 and 16:00 EST



Fig.1 Modeling domains

OMI Level 2 NO₂ data product (OMNO2) version 3.0

- Resolution: 13km×26km to 40km×250km
- Pass-over time: approximately 13:45 Local Time
- Global coverage every other day
- Vertical column densities (VCDs) derived using tropospheric NO₂ slant column densities (SCDs) from OMNO2 and air mass factors (AMFs):

$$AMF = \frac{SCD}{VCD}$$

- where AMFs depends on the position of the Sun (Solar Zenith Angle), the viewing angle of OMI, vertical distribution of NO₂, surface albedo, etc.
- NO₂ vertical profiles in CMAQ (instead of GMI for the operational retrieval) used in the calculation of AMFs (Goldberg et al., 2017)

Source apportionment of NO_x using Decoupled Direct Method (DDM)

- The first-order sensitivity (S⁽¹⁾) of NO_x concentration to NO_x emission from an individual sector reflects contribution of the NO_x emission source to overall NO_x concentration (with Δε of -1):

$$C_{(1+\Delta\epsilon)E_0} = C_{E_0} + \frac{1}{\Delta\epsilon} \frac{\partial C}{\partial E_0} \Delta\epsilon E_0 = C_{E_0} + \Delta\epsilon S^{(1)}$$

- Onroad, ptegu, nonroad, ptnonipm (point sources not included in EGU or oil/gas), c1c2 rail (C1 and C2 commercial marine emissions plus railroad emissions) and beis (> 80% of NO_x emission)
- Convert to contributions to NO_x columns

Results and discussions

Tropospheric NO₂ Columns in CMAQ vs. OMI

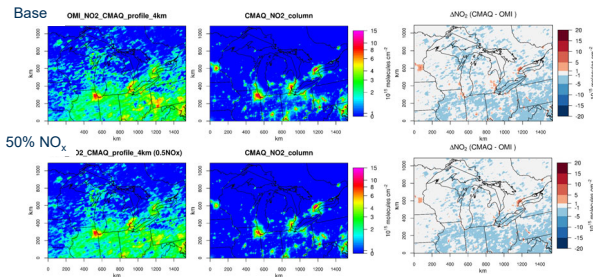
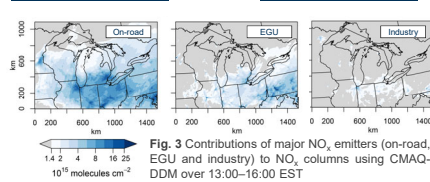


Fig. 2 Tropospheric NO₂ columns derived from OMI retrievals (left) and CMAQ simulations (middle), and differences between OMI and CMAQ (right). (Top: base simulation; Bottom: 50% reduction in NO_x emissions from mobile sources in the US)

Table 1 Overall evaluation of CMAQ simulations compared to OMI retrievals

Case	N	Mean Bias (10 ¹⁵)	Mean Error (10 ¹⁵)	Fractional Bias (%)	Fractional Error (%)	r ²
Base	104829	-0.69	0.83	-65%	76%	0.41
50% NO _x	104829	-0.68	0.78	-68%	77%	0.39

Model-satellite Gap ← ? → On-road Emissions



- CMAQ simulates higher NO₂ columns above the 90th (85th) percentile in the base case than OMI retrievals at grid cells where on-road (other) sources dominate (Fig. 4)
- Reduction in on-road NO_x emissions leads to better agreement between CMAQ and OMI at the high end of NO₂ columns (>5×10¹⁵ molecules/cm²) in locations where on-road sources dominate, while the improvement is not seen at other grid cells

Compared to Ground-based Measurements

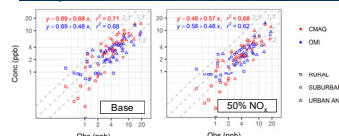


Fig. 5 Comparison of NO₂ surface concentrations derived using CMAQ and OMI with ground-based measurements at the AQS sites. NO₂ columns from OMI are converted to concentrations with the concentration-to-column ratios in CMAQ.

Base simulation

- Rural: CMAQ < OMI (sensitive to upper tropospheric NO_x) (Napelenok et al., 2008; Goldberg et al., 2017)
- Urban: CMAQ > OMI (likely due to overestimation of anthropogenic NO_x emissions)
- Overall: CMAQ < OMI (Table 1)

50% NO_x emission reduction (US mobile)

- Reduced model-satellite differences in urban areas i.e., Chicago, Detroit
- No significant changes in evaluation statistics (MB, ME, FB, FE and r²) compared to the base case

Results and discussions

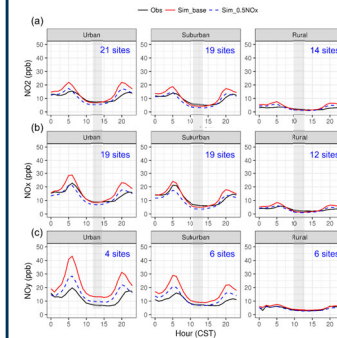


Fig. 6 Diurnal trends of NO₂, NO_x and NO_y in CMAQ simulations compared to ground-based measurements at the AQS sites. Shaded area indicates OMI pass-over time

- OMI mostly underestimates NO₂ concentrations, regardless of location
- Reduction in NO_x emissions decreases high biases of CMAQ NO₂ both in urban/suburban areas and at peaks (Fig. 6)
- Good agreement with measured NO₂ / NO_x at the surface during satellite pass-over time

Conclusions

- CMAQ shows low biases in NO₂ columns / surface concentrations against OMI retrievals / ground-based measurements in rural areas, with high biases in urban areas (not in all locations)
- Decreased emissions from on-road mobile sources in CMAQ reduce differences of CMAQ simulations with OMI retrievals & ground-based measurements at the high end of NO₂ columns / concentrations in urban areas
- Overestimation of NO₂ columns in CMAQ relative to OMI occurs in locations where other sources (e.g., EGU) dominate as well, which needs further investigation

Acknowledgements

This research was funded by the Electric Power Research Institute grant number 10005953 and the National Aeronautics and Space Administration (NASA) Applied Sciences Program grant number NNX16AQ29G.

References

- Goldberg et al., (2017). Doi: <https://doi.org/10.5194/acp-17-11403-2017>
- McDonald et al., (2018). Doi: <https://doi.org/10.1021/acs.est.8b00778>
- Napelenok et al., (2008). Doi: <https://doi.org/10.5194/acp-8-5603-2008>
- Souri et al., (2016). Doi: <https://doi.org/10.1016/j.atmosenv.2016.02.020>
- Travis et al., (2016). Doi: <https://doi.org/10.5194/acp-16-13561-2016>

- Significant underestimation of NO₂ surface concentrations at the low end in the CMAQ base case; mostly occurs in rural areas, with overestimation at urban & suburban sites at times (Fig. 5)